

July 2024

# Entry HANDBOOK



**WORLD MASTERS ATHLETICS**  
**ALACHUA COUNTY**  
— FLORIDA  
INDOOR CHAMPIONSHIPS 2025

## 23-30 March 2025

[wmaci2025.com](http://wmaci2025.com) // [info@wmaci2025.com](mailto:info@wmaci2025.com)



# ORGANIZERS, PARTNERS & SPONSORS



# TABLE OF CONTENTS

<b>Welcome Messages .....</b>	<b>4</b>
<b>Organizers .....</b>	<b>7</b>
<b>Welcome to the Sunshine State .....</b>	<b>8</b>
<b>Event Locations .....</b>	<b>10</b>
<b>Entry Requirements &amp; Procedures .....</b>	<b>13</b>
<b>Contry Codes .....</b>	<b>17</b>
<b>Entry Form .....</b>	<b>18</b>
<b>WMACi 20245 Offical Apparel .....</b>	<b>19</b>
<b>Waiver .....</b>	<b>20</b>
<b>Full Competition Schedule .....</b>	<b>24</b>
<b>Men’s Competition Schedule .....</b>	<b>25</b>
<b>Women’s Competition Schedule .....</b>	<b>26</b>
<b>Visa Information .....</b>	<b>27</b>
<b>Transportation &amp; Accommodation .....</b>	<b>29</b>
<b>Training .....</b>	<b>36</b>



# WELCOME MESSAGES



**Rep Chuck Clemons** *Speaker pro tempore, District 22*

**Ladies and Gentlemen!**

I would like to invite you to Alachua County, Florida for the 2025 World Masters Athletics Indoor Championships. Florida is a warm and welcoming destination, with a variety of offerings for athletes and families to enjoy. North Central Florida offers several natural and cultural attractions including numerous refreshing springs, trails, and caverns to explore, museums and more.

From the Gold Coast of South Florida to the Emerald Coast of the panhandle in Northwest Florida, we are home to some of the most beautiful beaches in the world. In the morning you can enjoy the sunrise over the Atlantic Ocean and travel west to watch the sunset over the Gulf of Mexico. Florida has over 825 miles (1,227km) of beaches that shine year-round.

The state of Florida is home to many theme parks including Walt Disney World, Universal Studios, Busch Gardens, Legoland, SeaWorld and more. We are confident that Florida offers something for everyone, and we encourage you to explore all that we have to offer.

The 2025 World Masters Athletics Indoor Championships will be a memorable experience for athletes and families. We look forward to seeing you in Alachua County, Florida in March 2025!



**Keith Perry** *Florida State Senator, District 9*

**Dear Masters Athletes and Guests,**

We are thrilled to welcome you to Alachua County, Florida, for the 2025 World Masters Athletics Indoor Championships, taking place from March 23-30, 2024. This event marks the debut of WMACi25 in the United States, and we are excited to share this milestone with you.

Your dedication to training and competing in masters athletics is truly commendable. We celebrate your passion and achievements and are committed to providing you with an exceptional experience in our community. Florida boasts an array of natural and recreational attractions, including 7,800 lakes, 8,426 miles (13,560 km) of shoreline, 1,711 rivers and streams, professional sports teams across various leagues, and numerous theme parks. It is an ideal destination for sports, recreation, and enjoyment.

In March, you can expect an average daily temperature of 73°F (23°C), creating a pleasant and inviting atmosphere. Beyond the favorable weather, Florida's rich and diverse culture, rooted in its 16th-century discovery by Spanish explorers, adds to its charm. Just as those explorers sought new opportunities nearly 500 years ago, we invite you to explore Florida's treasures and enjoy its natural beauty.

We look forward to hosting you and making this a memorable event.





## **Margit Jungmann** *WMA President*

On behalf of World Masters Athletics, I cordially invite you to attend the 2025 World Masters Athletics Indoor Championships which will be held in Alachua County, Florida. After two successful World Master Indoor Championships held in Torun/Poland, the Masters family will now meet in Gainesville/USA.

Alachua County is located in the north-central region of the State of Florida in the southeastern United States of America. It is a beautiful region that offers something for everyone: first of all, a brilliant sports infrastructure, but also an ideal combination of nature and cultural richness to discover. The County seat is located in the largest City of the County, in Gainesville. Home to the University of Florida and Santa Fe College, Gainesville is an ideal location for this Championship with a brand-new Indoor Facility.

The representatives of Alachua County are supporting this Championship, and you are assured of a friendly reception and a heartfelt welcome. WMA and the LOC are working closely together to ensure the 2025 WMA Indoor Championships are a great success.

I would like to thank Alachua County Government and the Gainesville Sports commission for their initiative to bid for the event. They have convinced the Council that we have found the perfect partner for our Masters Athletics World Indoor Championships with high level sports facilities and infrastructure, but above all with a team which assures full support in the organization and management of this competition: RADDSPORTS/Alachua County Sports and Events Center as well as Viking Companies. I also wish to acknowledge the representatives of the Athletics Federation of USA (USATF) for their support in the entire process. WMA needs active member federations to realize its tasks.

I have very fond memories of my stay in Gainesville during the inspection visit. I wholeheartedly encourage you to take part in the championships and to discover the region, the city and the people. And never forget: It is great being part of our Masters Athletics family and to share the passion.



## **Max Siegel** *USA Track & Field CEO*

USA Track & Field is proud to present Alachua County, Florida, as the host of the 2025 World Masters Athletics Indoor Championships. We are grateful to the community for pioneering the first WMACi event to be held in the United States. We have no doubt that Alachua County and the state of Florida will provide an amazing experience for Masters athletes from across the globe.

The officials and administrators who serve Masters athletics through their year-round efforts are committed to supporting the Local Organizing Committee in producing a world-class competition. As you are training and preparing for your visit, rest assured you will experience the level of competition that you deserve.

On behalf of USA Track & Field, the national governing body for the sport of athletics in the United States of America, we invite you to attend the 2025 World Masters Athletics Indoor Championships in Alachua County, Florida, March 23-30, 2025. We hope to be cheering you on soon and wish you the best of luck on achieving your goals.





**Mary Alford** *Alachua County Board of County Commissioners Chair*

On behalf of Alachua County, Florida we would like to extend a warm welcome to athletes, officials, dignitaries, and guests as you make plans to travel to Alachua County, Florida for the World Masters Athletics Indoor Championships 2025.

We are honored for the opportunity to host this exceptional event, which brings together athletes from around the world for competition, camaraderie, and community, and we take great pride as we welcome you to compete in our vibrant destination filled with rich culture and natural beauty.

Named the best city in Florida to move to by USA Today, Gainesville and Alachua County offer a vibrant, diverse, and dynamic community for visiting athletes from around the world. Home to the University of Florida, one of the leading public universities in the United States, the destination, and the events held here, are characterized by excellence and the spirit of learning and discovery.

Soon to be celebrating its 200th anniversary, Alachua County is known for its rich history, outstanding cultural offerings, and diverse and inclusive population. The unique nature of our landscape provides one-of-a-kind opportunities for exploration and discovery – from viewing free-roaming bison and wild horses at Paynes Prairie State Park to cooling off in our first magnitude freshwater springs – there are endless opportunities for exploration during your time in the region.

Together with our hospitality and sports tourism community, we are dedicated to creating a supportive, welcoming, and professionally managed event and destination experience, with the amenities and care needed for you to perform your very best on the track and in the field of competition, all while enjoying the incredible leisure opportunities in Alachua County.

We are eager to introduce you to our first-class facilities including the Alachua County Sports and Events Center with 90,000 sq. ft. of uninterrupted event space, 60+ hotels and dozens of dining options for your leisure time.

Getting to Gainesville and Alachua County is convenient and accessible. Centrally located between major Florida metros, the Gainesville Regional Airport features non-stop flights to and from Atlanta, Charlotte, Dallas/Fort Worth, Fort Lauderdale, and Miami and one-stop service to 343 destinations and 55 countries.

Your dedication to your sport is truly inspiring, and as we welcome you to Alachua County, we wish you the very best and hope that your stay with us is filled with success and lasting memories.



# ORGANIZERS

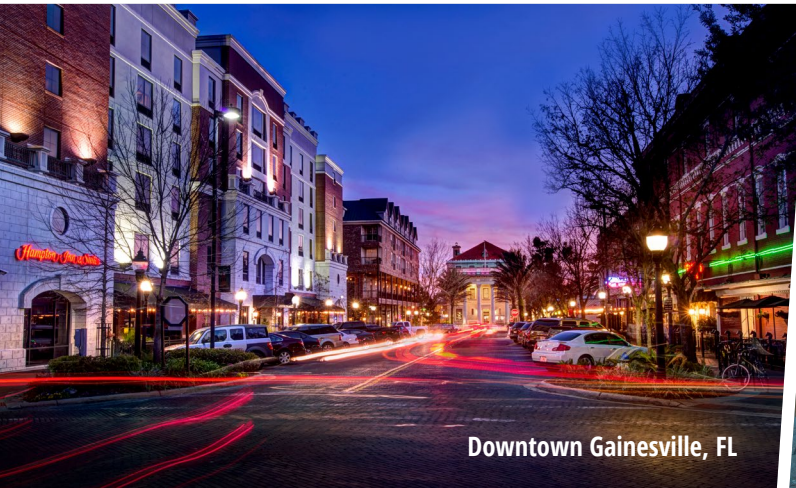
## WMA Council

**Margit Jungmann** – President  
**Lynne Schickert** – Executive Vice President  
**Alan Bell** – Vice President (Competition)  
**Jean Thomas** – Treasurer  
**Juan Ordònez** – Secretary  
**Antti Pihlakoski** – World Athletics Representative

## Organizing Committee

### Alachua County Local Organizing Committee Inc.

**Svein Dyrkolbotn** - Chairman  
**Richard Blalock** - Vice-Chair  
**Dr. Heather Gibson** - Secretary  
**Jody Davis** - Treasurer  
**James Di Virgilio**  
**Scott Walker**  
**Stephen V. Rodriguez** - Executive Director



Downtown Gainesville, FL



Celebration Pointe



# Welcome to the SUNSHINE STATE

Florida, the Sunshine State, welcomes over 140 million visitors per year and is one of the top destinations in the United States. Over 8 million overseas travelers each year visit Florida, for its sunshine, beaches, waterfront activities, shopping, sightseeing, amusement, and theme parks. Florida is also the top destination in the United States for sports event travelers. We encourage you to come learn why so many travelers make Florida their choice for sports, entertainment, recreation, and leisure!

Alachua County is conveniently situated in north-central Florida, with the Atlantic Ocean, Gulf of Mexico, Jacksonville, Orlando, and Tampa all within a two-hour drive. With average daily temperatures of 73°F / 23°C in March, you will be embraced by our warm climate, ideal to explore our vibrant and diverse community with a rich history, thriving arts scene, abundant natural beauty, and endless entertainment options. Home to the University of Florida, a dynamic arts community, world class museums, galleries, theaters, and music venues, we have something for everyone!

Alachua County has a population of almost 286,000 with over 75,000 college students. With over 6,000 international students from over 30 nations, you'll enjoy the cultural richness of our community. Gainesville is the largest city in Alachua County, contributing more than half of the population. Our community is excited to greet the athletes and guests of the WMACi25, with our southern hospitality and charm.

Home to the oldest continuously running track club in the United States, the Florida Track Club, Alachua County has been a running destination since the 1960's. The area has attracted many great athletes such as Frank Shorter, Jack Bachelor, Marty Liquori, Jeff Galloway, John Parker, Greta Waitz and more. The University of Florida has produced many Olympians in the sport of athletics over the years under the coaching leadership of legends such as Percy Beard, Jimmy Carnes, and now Mike Holloway, who has led the Florida Gators to 12 NCAA Division I National Championship Titles, 16 conference championship titles and 19 Olympic medals. In the 1960's the University of Florida's Dr. Robert Cade invented Gatorade, which is still one of the leading sport recovery drinks in the world, a legacy that is commemorated at the Cade Museum for Creativity and Invention in Gainesville, Florida.

We invite you to learn more by visiting [www.visitgainesville.com](http://www.visitgainesville.com) and [www.visitflorida.com](http://www.visitflorida.com) for more information about the many ways to explore and enjoy Alachua County and the state of Florida.





# Welcome to the Heart of the SUNSHINE STATE

Visit  
**GAINESVILLE**

Alachua County, FL



*Your Official*

## ALACHUA COUNTY DESTINATION PARTNER

Discover the vibrant charm of Gainesville and Alachua County and **make the most of your trip** to the 2025 World Masters Athletics Indoor Track Championship with **FREE visitor guides, maps,** and information on **attractions, dining, shopping, entertainment** and more. Dive into the local culture and explore all that this dynamic region has to offer. Visit Gainesville, Alachua County ensures that your stay is unforgettable!

Start your journey with [VisitGainesville.com](https://www.VisitGainesville.com)

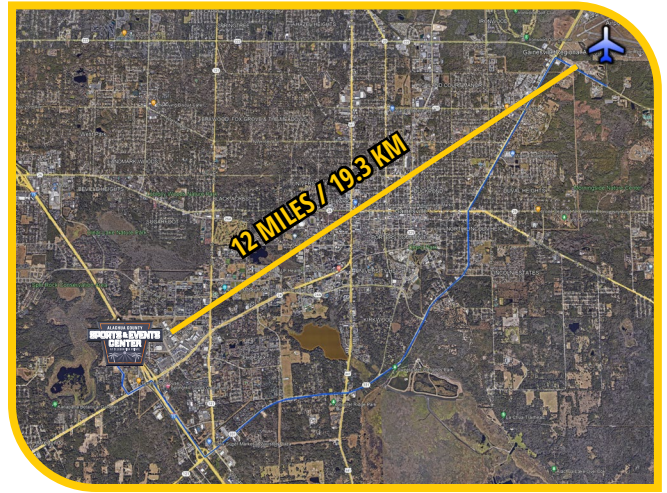


VISIT **FLORIDA**<sup>®</sup>  
PARTNER

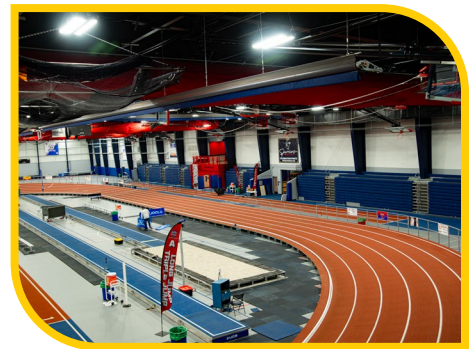
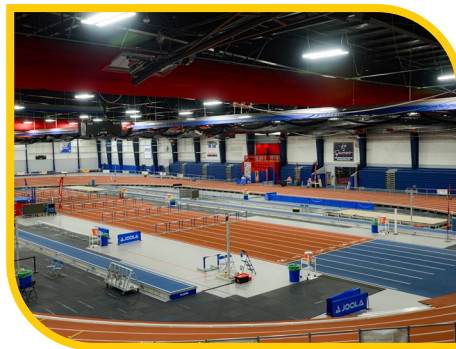
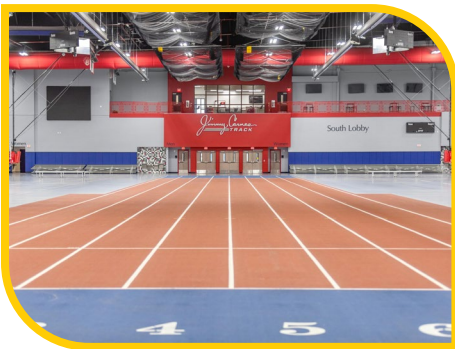
Alachua | Archer | Gainesville | Hawthorne | High Springs | La Crosse | Micanopy | Newberry | Waldo

# EVENT LOCATIONS

The 10<sup>th</sup> World Masters Athletics Indoor Championships will take place at two locations in Alachua County, Florida. The primary facility is the newly-built Alachua County Sports and Events Center (ACSEC) officially opened in May 2023. All typical indoor competitions will take place at the ACSEC which is conveniently located next to I-75 (the major highway through Florida) within the retail and entertainment district called Celebration Pointe. **The ACSEC is just 12 miles / 19.3km from the Gainesville Regional Airport (GNV).**



The ACSEC includes a 6-lane, 200m oval Mondo World Athletics compliant portable banked track, and Mondo 8-lane 60m sprint lanes. The facilities include 2 high jump, one pole vault, one long jump, one triple jump, one weight throw/shot put area and one shot put area. Outside of the ACSEC, there will be 110m of warm up lanes, pole vault, high jump, and long/triple jump warm up facilities, newly built for the WMACi25.

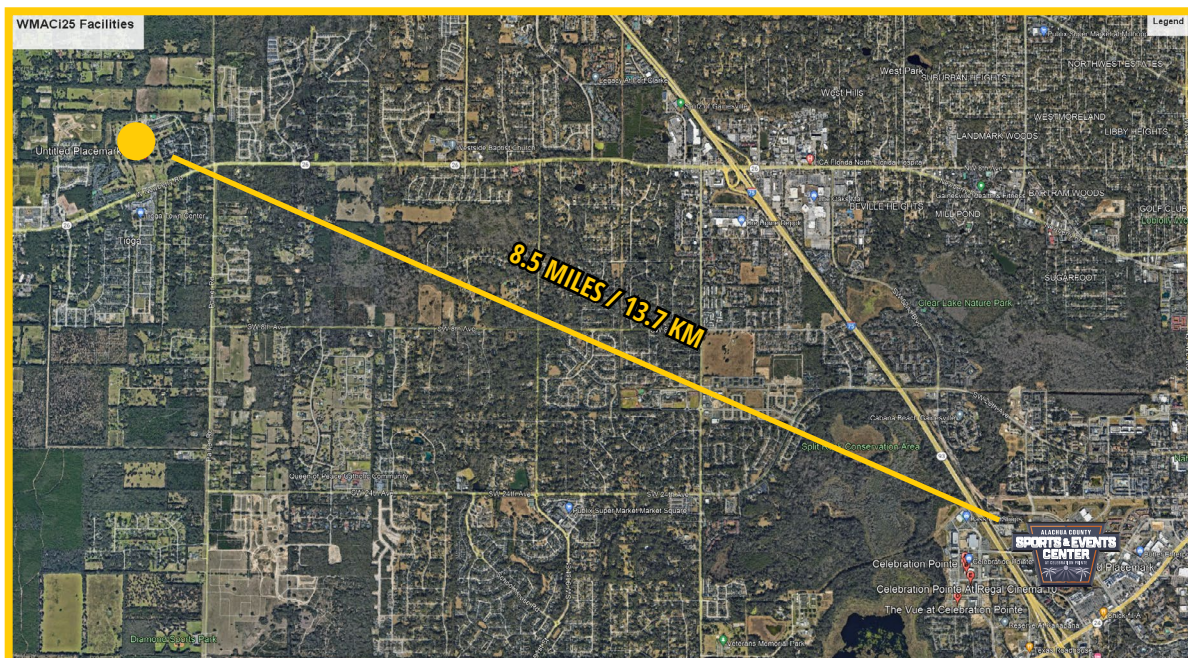


Just outside the doors of the ACSEC, the Celebration Pointe area will be transformed into an athlete's village, with vendors and live entertainment daily. Awards ceremonies for all events except Cross Country, will take place at the promenade main stage. The ACSEC will have WIFI accessible for all attendees, food and beverage, bar, and medical support. There are many restaurants and shops located in Celebration Pointe. The 10K Road Race and 10K Race Walk will take place on the roads of Celebration Pointe. All functions of the WMACi25 will be at the ACSEC/ Celebration Pointe including accreditation and TIC.



- 1 **Alachua County Sports and Events Center (ACSEC)**  
*Indoor Track & Field competition, Technical Information Center (TIC)*
- 2 **North Parking Garage**
- 3 **South Parking Garage**
- 4 **Athlete Village**
- 5 **Accreditation and Confirmation**
- 6 **Awards Stage**
- 7 **Start/Finish 10K Run Road Race**
- 8 **Start/Finish 10K Road Race Walk**
- 9 **Hotel Indigo - WMA Host Hotel, team managers room**
- 10 **Restaurants and Shops**
- 11 **Retail**
- 12 **Restaurants and Shops**
- 13 **Warm-up Area**

The secondary facility is West End Golf Course located just 8.5 miles / 13.7 kilometers from the ACSEC. This venue is becoming a public park and will feature competition areas for cross country, discus, hammer, and javelin, constructed for the WMACi25 and will remain a legacy park for future events and public use. The primary and secondary facilities will be linked by transportation throughout the competition, for the convenience of those accredited athletes and guests in attendance.





# MORE EXPERIENCES MORE CELEBRATIONS

## *More to the Pointe*

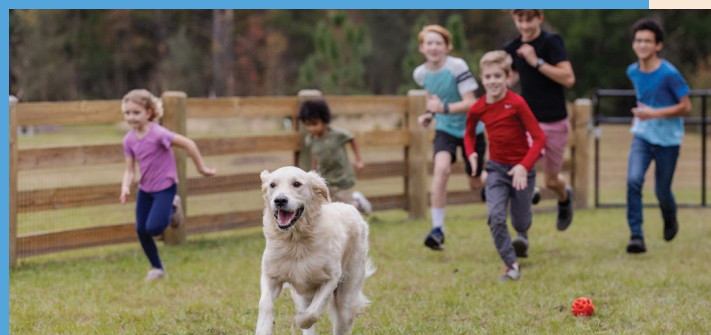
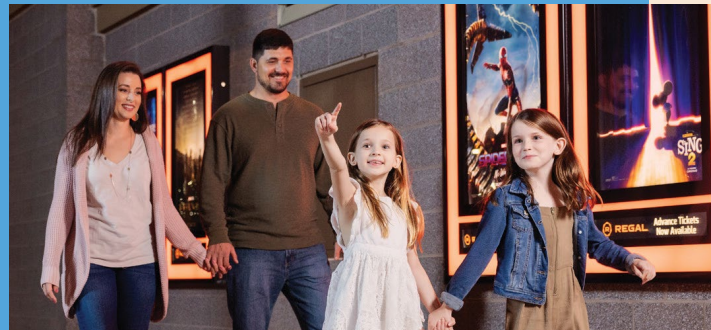
### THERE'S MORE TO DO, SEE AND ENJOY AT CELEBRATION POINTE.

Looking to relax and enjoy your time after your Master's event? Need a massage to loosen up your limbs? Forgot some gear for your event? Or just want to unwind by listening to live music? Then look no further than the businesses at Celebration Pointe! Our all-inclusive environment saves you time and energy so you can enjoy more of your stay. It's home to one of the best Regal Cinemas in the country, and a lot of delicious restaurants for every palate and preference, there's something for everyone!

Join the Celebration Pointe experience!  
Just west of I-75 off Archer Road.

**Don't miss monthly concerts:**  
Jazz on the Green & Playlist @ the Pointe

**VISIT [CELEBRATIONPOINTE.COM](http://CELEBRATIONPOINTE.COM)**



# Entry REQUIREMENTS & PROCEDURES

## General Rules

The 2025 World Masters Athletics Championships Indoor in Alachua County, Florida, USA, (“Championships”) will be held under the regulations of World Athletics as modified for Masters by World Masters Athletics (“WMA”) via their Competition Rules and any other special rules specified for this competition.

During the Championships, each athlete will represent a country, and each country has a national Masters athletics organization that is a member of WMA (“National Organization”). Note: if you are unable to locate your National Organization, please e-mail the WMA Secretary at [secretary@world-masters-athletics.org](mailto:secretary@world-masters-athletics.org).

## Eligibility Requirements

The Championships are open only to men and women who are age 35+ (born on or before 23 March 1990) and who are physically fit. Entering the Championships does not require any specific level of performance.

An athlete must be a citizen of the country they will represent, or they must be a resident of that country for a minimum of 3 years. If an athlete has represented a different country at a previous WMA World Championship or Regional Championship, they must have change-of-allegiance paperwork on file with WMA at least 30 days before the registration deadline.

All athletes must meet the requirements of WMA and their National Organization, and they must have their registration accepted by their National Organization in order to be eligible to participate in the Championships. It is each athlete’s responsibility to ensure that they understand and meet all the requirements prior to registering for the Championships. An athlete’s National Organization has the right to reject registrations of athletes whom they consider ineligible or who do not meet their requirements.

Submission of a registration signifies that the athlete agrees to follow the rules laid down by WMA and the technical and organizing committees. WMA has the right to reject registrations of athletes whom they consider ineligible or who do not meet WMA’s requirements.



## Age Groups

Individual events are divided into age groups as shown below

Classifications	Birthday (Born from...)
<b>Men &amp; Women - 35</b>	24 March 1985 - 23 March 1990
<b>Men &amp; Women - 40</b>	24 March 1980 - 23 March 1985
<b>Men &amp; Women - 45</b>	24 March 1975 - 23 March 1980
<b>Men &amp; Women - 50</b>	24 March 1970 - 23 March 1975
<b>Men &amp; Women - 55</b>	24 March 1965 - 23 March 1970
<b>Men &amp; Women - 60</b>	24 March 1960 - 23 March 1965
<b>Men &amp; Women - 65</b>	24 March 1955 - 23 March 1960
<b>Men &amp; Women - 70</b>	24 March 1950 - 23 March 1955
<b>Men &amp; Women - 75</b>	24 March 1945 - 23 March 1950
<b>Men &amp; Women - 80</b>	24 March 1940 - 23 March 1945
<b>Men &amp; Women - 85</b>	24 March 1935 - 23 March 1940
<b>Men &amp; Women - 90</b>	24 March 1930 - 23 March 1935
<b>Men &amp; Women - 95</b>	24 March 1925 - 23 March 1930
<b>Men &amp; Women - 100+</b>	Born on or before 23 March 1925

## General Entry Information

Entry into the Championships consists of three main parts:

### Registration

Athletes may register online or by using a paper registration form. Online is the preferred method of registration. See below for details about each method. All registrations must include full payment to be considered valid. Athletes who cannot pay online must instead send a paper registration form and payment to their National Organization, which will then register them and pay on their behalf. The **registration deadline is 23 January 2025**. No registrations will be accepted after the registration deadline.

### Validation

All registrations are subject to validation by each athlete's National Organization. National Organizations will confirm the athlete's date of birth, citizenship and/or residential qualifications, and other relevant requirements. After an athlete's registration has been validated, its status will display as "accepted" on the list of registrations on the Championships website. National Organizations may also reject registrations of athletes whom they consider ineligible or who do not meet their requirements.

Validation is a manual process that each National Organization completes, so there will be some time (days or weeks) between when an athlete submits their registration and when it is validated. Athletes who have questions about the status of their registration or about the requirements for their country should contact their National Organization. For athletes who represent a country that is not a WMA Member Country, their registrations will be subject to the approval of the WMA Council.



## Confirmation/Declaration

Athletes must complete the confirmation/declaration process to confirm whether or not they will participate in their events (confirm or scratch). This process begins at the start of the Championships. The Championships website and the Competition Handbook will provide details about the confirmation/declaration process, including applicable deadlines.

## Registration Fees

**Registration Fee:** \$80

**Each Individual Event:** \$40

**Pentathlon:** \$50

**Accompanying Person (age 14 or older):** \$30

**Accompanying Person (under age 14):** \$15

**Country-Specific Team Fee:** Varies by Country

No refunds available. All fees are registration fees, not participation fees, and there are no refunds for any reason.

There is no registration fee for relays. Only one relay per country, per relay distance, per age group is allowed. Registration for relays will be done during the Championships by the team managers.

## Online Registration Procedure

- 🍊 Complete the online registration form prior to the registration deadline
- 🍊 Submit payment by credit card (Visa or Mastercard) at the end of the registration process
- 🍊 Save and/or print the confirmation screen for your records
- 🍊 Send a copy of your birth certificate to your National Organization for validation purposes if you have not already done so in the past, and meet any other requirements set forth by your National Organization
- 🍊 Your National Organization will complete the validation process for your registration

## Paper Registration Procedure

- 🍊 Contact your National Organization to request a paper registration form
- 🍊 Confirm the latest date required by your National Organization for submission of your paper registration. NB: Your National Organization MUST input your registration and payment into the online entry system prior to the registration deadline
- 🍊 Complete the registration form and make a copy for your records
- 🍊 Send the completed registration form and all registration fees to your National Organization prior to the registration deadline (do not send paper registration forms directly to the LOC). NB: Paper registrations sent to your National Organization for processing MUST include all registration fees
- 🍊 Send a copy of your birth certificate to your National Organization for validation purposes if you have not already done so in the past, and meet any other requirements set forth by your National Organization
- 🍊 Your National Organization will submit your registration, pay on your behalf, and complete the validation process for your registration



## WMA National Organization Requirements

WMA requires that each National Organization validate all of its country's registrations electronically via the online entry system. WMA will accept only those athletes whose registrations have been validated by National Organizations. Each National Organization must also input any paper registrations it receives from its athletes into the online entry system. Payment is required at the time the registrations are submitted. If for some reason a National Organization is unable to pay online, it must request an exemption from WMA. If the exemption is granted, the National Organization will be provided with details about how to pay offline. The National Organization will still be required to input paper registrations into the online entry system and to validate its registrations electronically.

**All registrations must be submitted online and paid before 23 January 2025.** Any registrations for which WMA has not received payment by this deadline will be canceled, and those athletes will be ineligible to compete. No exceptions will be allowed. In addition, **all registrations must be validated before 30 January 2025.** Any registrations that have not been validated by this deadline may be rejected, and those athletes will be ineligible to compete.

National Organizations will receive communications regarding the entry process prior to the start of registration. National Organizations that do not receive these communications should contact the WMA Secretary.





# COUNTRY CODES

<b>Albania</b> .....	ALB	<b>Cyprus</b> .....	CYP	<b>Kuwait</b> .....	KUW	<b>Poland</b> .....	POL
<b>Algeria</b> .....	ALG	<b>Czech Republic</b> .....	CZE	<b>Kyrgyzstan</b> .....	KGZ	<b>Portugal</b> .....	POR
<b>American Somoa</b> .....	ASA	<b>Denmark</b> .....	DEN	<b>Latvia</b> .....	LAT	<b>Puerto Rico</b> .....	PUR
<b>Andorra</b> .....	AND	<b>Djibouti</b> .....	DJI	<b>Lebanon</b> .....	LBN	<b>Qatar</b> .....	QAT
<b>Angola</b> .....	ANG	<b>Dominica</b> .....	DMA	<b>Lesotho</b> .....	LES	<b>Romania</b> .....	ROU
<b>Anguilla</b> .....	AIA	<b>Dominican Republic</b> .....	DOM	<b>Liberia</b> .....	LBR	<b>Rwanda</b> .....	RWA
<b>Antigua &amp; Barbuda</b> .....	ANT	<b>Ecuador</b> .....	ECU	<b>Liechtenstein</b> .....	LIE	<b>Saint Kitts &amp; Nevis</b> .....	SKN
<b>Argentina</b> .....	ARG	<b>Egypt</b> .....	EGY	<b>Lithuania</b> .....	LTU	<b>Saint Lucia</b> .....	LCA
<b>Armenia</b> .....	ARM	<b>El Salvador</b> .....	ESA	<b>Luxembourg</b> .....	LUX	<b>Saint Vincent</b> .....	VIN
<b>Aruba</b> .....	ARU	<b>Equatorial Guinea</b> .....	GEG	<b>Madagascar</b> .....	MAD	<b>Samoa</b> .....	SAM
<b>Australia</b> .....	AUS	<b>Estonia</b> .....	EST	<b>Malawi</b> .....	MAW	<b>San Marino</b> .....	SMR
<b>Austria</b> .....	AUT	<b>Ethiopia</b> .....	ETH	<b>Malaysia</b> .....	MAS	<b>Saudi Arabia</b> .....	KSA
<b>Azerbaijan</b> .....	AZE	<b>Fiji</b> .....	FIJ	<b>Malta</b> .....	MLT	<b>Senegal</b> .....	SEN
<b>Bahamas</b> .....	BAH	<b>Finland</b> .....	FIN	<b>Marshall Islands</b> .....	MHL	<b>Serbia</b> .....	SRB
<b>Bangladesh</b> .....	BAN	<b>France</b> .....	FRA	<b>Mauritania</b> .....	MTN	<b>Seychelles</b> .....	SEY
<b>Barbados</b> .....	BAR	<b>French Polynesia</b> .....	PYF	<b>Mauritius</b> .....	MRI	<b>Sierra Leone</b> .....	SLE
<b>Belgium</b> .....	BEL	<b>The Gambia</b> .....	GAM	<b>Mexico</b> .....	MEX	<b>Singapore</b> .....	SGP
<b>Belize</b> .....	BIZ	<b>Georgia</b> .....	GEO	<b>Micronesia</b> .....	FSM	<b>Slovak Republic</b> .....	SVK
<b>Benin</b> .....	BEN	<b>Germany</b> .....	GER	<b>Moldova</b> .....	MDA	<b>Slovenia</b> .....	SLO
<b>Bermuda</b> .....	BER	<b>Ghana</b> .....	GHA	<b>Monaco</b> .....	MON	<b>Solomon Islands</b> .....	SOL
<b>Bolivia</b> .....	BOL	<b>Gibraltar</b> .....	GIB	<b>Mongolia</b> .....	MGL	<b>South Africa</b> .....	RSA
<b>Bosnia &amp; Herzegovina</b> .....	BIH	<b>Great Britain &amp; Northern Ireland</b> .....	GBR	<b>Montenegro</b> .....	MNE	<b>Spain</b> .....	ESP
<b>Botswana</b> .....	BOT	<b>Greece</b> .....	GRE	<b>Montserrat</b> .....	MNT	<b>Sri Lanka</b> .....	SRI
<b>Brazil</b> .....	BRA	<b>Grenada</b> .....	GRN	<b>Morocco</b> .....	MAR	<b>Sudan</b> .....	SUD
<b>British Virgin Islands</b> .....	IVB	<b>Guam</b> .....	GUM	<b>Mozambique</b> .....	MOZ	<b>Surinam</b> .....	SUR
<b>Brunei</b> .....	BRU	<b>Guatemala</b> .....	GUA	<b>Myanmar</b> .....	MYA	<b>Sweden</b> .....	SWE
<b>Bulgaria</b> .....	BUL	<b>Guinea</b> .....	GUI	<b>Namibia</b> .....	NAM	<b>Switzerland</b> .....	SUI
<b>Burundi</b> .....	BDI	<b>Guyana</b> .....	GUY	<b>Nauru</b> .....	NRU	<b>Tajikistan</b> .....	TJK
<b>Cabo Verde</b> .....	CPV	<b>Haiti</b> .....	HAI	<b>Nepal</b> .....	NEP	<b>Thailand</b> .....	THA
<b>Cameroon</b> .....	CMR	<b>Honduras</b> .....	HON	<b>Netherlands</b> .....	NED	<b>Togo</b> .....	TOG
<b>Canada</b> .....	CAN	<b>Hong Kong, China</b> .....	HKG	<b>New Zealand</b> .....	NZL	<b>Tonga</b> .....	TGA
<b>Cayman Islands</b> .....	CAY	<b>Hungary</b> .....	HUN	<b>Nicaragua</b> .....	NCA	<b>Trinidad &amp; Tobago</b> .....	TTO
<b>Central African Republic</b> .....	CAF	<b>Iceland</b> .....	ISL	<b>Niger</b> .....	NIG	<b>Tunisia</b> .....	TUN
<b>Chad</b> .....	CHA	<b>India</b> .....	IND	<b>Nigeria</b> .....	NGR	<b>Turkey</b> .....	TUR
<b>Chile</b> .....	CHI	<b>Indonesia</b> .....	INA	<b>Norfolk Island</b> .....	NFI	<b>Turkmenistan</b> .....	TKM
<b>China</b> .....	CHN	<b>Iran</b> .....	IRI	<b>North Macedonia (Republic of)</b> .....	MKD	<b>Turks &amp; Caicos Islands</b> .....	TKS
<b>Chinese Taipei</b> .....	TPE	<b>Ireland</b> .....	IRL	<b>Notern Mariana Islands</b> .....	NMI	<b>Tuvalu</b> .....	TUV
<b>Colombia</b> .....	COL	<b>Israel</b> .....	ISR	<b>Norway</b> .....	NOR	<b>Uganda</b> .....	UGA
<b>Comoros</b> .....	COM	<b>Italy</b> .....	ITA	<b>Pakistan</b> .....	PAK	<b>Ukraine</b> .....	UKR
<b>Congo</b> .....	CGO	<b>Jamaica</b> .....	JAM	<b>Palau</b> .....	PLW	<b>United Arab Emirates</b> .....	UAE
<b>Congo (Democratic Republic of)</b> .....	COD	<b>Japan</b> .....	JPN	<b>Palestine</b> .....	PLE	<b>United States of America</b> .....	USA
<b>Cook Isalnds</b> .....	COK	<b>Jordan</b> .....	JOR	<b>Panama</b> .....	PAN	<b>U.S Virgin Islands</b> .....	ISV
<b>Costa Rica</b> .....	CRC	<b>Kazakhstan</b> .....	KAZ	<b>Papua New Guinea</b> .....	PNG	<b>Uruguay</b> .....	URU
<b>Côte d'voire</b> .....	CIV	<b>Kenya</b> .....	KEN	<b>Paraguay</b> .....	PAR	<b>Uzbekistan</b> .....	UZB
<b>Croatia</b> .....	CRO	<b>Kiribati (Republic of)</b> .....	KIR	<b>Peru</b> .....	PER	<b>Vanuatu</b> .....	VAN
<b>Cuba</b> .....	CUB	<b>Korea</b> .....	KOR	<b>Philippines</b> .....	PHI	<b>Venezuela</b> .....	VEN
		<b>Kosovo</b> .....	KOS			<b>Zambia</b> .....	ZAM
						<b>Zimbabwe</b> .....	ZIM

# ENTRY FORM

This is an example form - ask your National Organization for it's entry form. Complete one entry form per person.

Country you represent		Citizen: YES / NO	Resident: YES / NO
Surname		Given / First Name	
Address		City	
Country		Postal Code	
Phone Number		Club	
Email Address			
Date of Birth	Day:	Month:	Year:
			Sex: FEMALE / MALE

Are you taking any medication or supplement that requires a Therapeutic Use Exemption (TUE) certificate? YES / NO

## CATEGORIES BELOW BASED ON YOUR AGE ON 23<sup>RD</sup> MARCH 2025

	35-39	40-44	45-49	50-54	55-59	60-64	65-69	70-74	75-79	80-84	85-89	90-94	95-99	100+
WOMEN														
MEN														

## EVENTS: PUT AN "X" BEFORE EACH EVENT YOU WANT TO ENTER

X	EVENT	BEST PERFORMANCE (2023-2025)
	60 m	
	200 m	
	400 m	
	800 m	
	1,500 m	
	3,000 m	
	60m Hurdles	
	3,000 Track Race Walk	
	High Jump	
	Pole Vault	
	Long Jump	
	Triple Jump	
	Shot Put	
	Discus Throw	
	Hammer Throw	
	Weight Throw	
	Javelin Throw	
	Pentathlon	
	Cross Country	
	10 km Road Race Walk	
	10 km Road Race	

## EVENT & APPAREL PRICING

ITEM	UNIT PRICE	QTY	TOTAL
Registration Fee	\$80 USD		
Each Individual Event (exclude events below)	\$40 USD		
Pentathlon (Combined Events)	\$50 USD		
Transportation Pass	\$30 USD		
Results Book - PDF sent via email	\$10 USD		
Printed Competition Handbook	\$15 USD		
Accompanying Person (14 and older)	\$30 USD		
Accompanying Person (under 14)	\$15 USD		
Total			
Additional Country-specific team fee*			

\*Ask your WMA National Masters National Organization for details

ARE YOU ATTENDING OPENING CEREMONY ON 22 MARCH? YES/ NO

ACCOMPANYING PERSONS		EMERGENCY CONTACT	
Full Name:		Full Name:	
Full Name:		Phone Number:	

WMACi 2025

# Official Apparel

Exclusive Pre-Sale

Choose between Design 1 & Design 2 for all apparel. Can't decide? Order one of each!

## Navy Cotton T-Shirt: \$20 pre-sale

(Shown with Design 2)

For those that enjoy natural materials, this high-end ringspun, combed 100% cotton gives you the comfort you seek while supporting sustainable manufacturing. 5.3 oz fabric weight.



## Royal Short Sleeve Performance Shirt: \$30 pre-sale

(Shown with Design 1)

The Cool T is a high-performance athletics t-shirt that allows you to focus fully and unlock your potential. 4.1 oz fabric weight. 100% polyester.

## White Long Sleeve Performance Shirt: \$35 pre-sale

(Shown with Design 1)

The long-sleeved Cool T is a high-performance shirt perfect for training inside and out while serving as a perfect transitional piece. 4.1 oz fabric weight. 100% polyester.



[Purchase at WMACi2025.com](https://www.WMACi2025.com)

# WAIVER

## Agreement, Consent and Release

World Masters Athletics (“WMA”) has sanctioned Alachua County Local Organizing Committee, Inc. as the local organizing committee (“LOC”) to conduct the 2025 World Masters Athletics Championships Indoor (“WMA Championships”) in Alachua County, Florida, USA (“Host Country”), during 23-30 March 2025.

I hereby apply for entry to the WMA Championships on the following terms and conditions which form a binding agreement between me, WMA and the LOC.

1. I will abide by the WMA Competition Rules and World Athletics rules and regulations as modified for WMA Championships by WMA and any special rules specified for this competition which will be outlined on the WMA Championships website and communicated to competitors.
2. I understand that my registration is subject to validation by the national Masters athletics organization that is affiliated with WMA (“National Organization”) of the country I have chosen to represent during the Championships. I understand and agree that I must meet the requirements of WMA and my National Organization in order to be eligible to participate in the Championships, and I further understand that it is my responsibility to ensure that I understand all the requirements prior to registering for the Championships. I understand that my National Organization will review my registration, evaluate all requirements, and either accept or reject my registration. I understand and agree that having my registration accepted by my National Organization is one of the required conditions necessary to participate in the Championships, and I further understand and agree that I am ineligible to participate in the Championships if my National Organization or WMA rejects my registration. I agree to provide to my National Organization and WMA all details and documents that they require for the validation process.
3. I represent that I am a bona fide athletics competitor. I am physically and mentally fit to compete in the WMA Championships safely and without causing injury to myself or other participants in the WMA Championships.
4. I agree and consent to accept medical treatment from the LOC, WMA or their servants, agents or contractors, ambulance officers or medical personnel in the event that I am injured or otherwise become ill or incapacitated during the WMA Championships. In the event of any emergency medical treatment or services provided to me requiring the payment of fees, I agree to pay these fees upon request.
5. Participation in the WMA Championships and related activities (“Activities”) has foreseeable and unforeseeable inherent risks, hazards and dangers that no amount of care, caution or expertise can eliminate, including without limitation, the potential for serious bodily injury, sickness, disease, and contagion, including but not limited to COVID-19, permanent disability, paralysis and loss of life. I understand and acknowledge that there are risks, dangers and hazards inherent in the Activities (“Risks”), and I expressly and voluntarily assume the Risks and the responsibilities for any damages, liabilities, and losses, including loss of income, expenses, or any other related losses arising from the Risks as a result of my participation in the Activities.



6. In consideration of WMA and the LOC permitting me to participate in the WMA Championships, I agree to indemnify, hold harmless and release WMA and the LOC and their directors, officers, employees, contractors, sponsors, servants and agents, and all officials and volunteers from and against any injury, loss, damage, liability, cost, expense, demand, claim or action whether arising at common law or under statute that I may suffer or incur arising out of or in connection with my participation in the WMA Championships including as a result of the negligence, breach of statutory duty or any act or omission of WMA and the LOC and their directors, officers, employees, contractors, sponsors, servants or agents and all officials and volunteers.

7. The indemnity and release in clause 6 above shall be, and operate separately, in favour of all persons, corporations and organizations involved or otherwise engaged in promoting or staging the WMA Championships and their servants, agents and representatives including but not limited to the medical and paramedical personnel and police and ambulance officers, and the indemnity and release shall operate whether or not the injury, loss, damage, liability, cost, expense, demand, claim or action is attributable to any act or omission or neglect of any one or more of them.

8. I consent to photographs and video footage being taken of me before, during and after my participation in the WMA Championships. I agree and acknowledge that the photographs and video footage are owned by WMA and the LOC and that those parties may use the photographs and video footage for promotional or other purposes without my further consent being obtained. I also consent to those parties using my name, image, voice, likeness and my performance in the WMA Championships, at any time, to promote and publicize current and future WMA championships or their businesses, without compensation.

9. I agree that all my personal details and the personal details of all accompanying persons ("Personal Details") are provided to WMA and the LOC and may be provided by them to:

- a. The immigration service of the Host Country
- b. Future hosts of WMA championships
- c. The registration services provider SimplyRegister, Inc.
- d. WMA and its Regional Associations and National Members
- e. The Track and Field Master Athletics Cohort (TaFMAC) study, if enrolled in the medical research study
- f. World Athletics, if registered for the World Athletics conference
- g. [MastersRankings.com](https://www.mastersrankings.com), the rankings partner of WMA

10. I agree that the Personal Details may be used by any party to whom they are provided for the following purposes:

- a. Any purpose required or deemed appropriate by, or to assist, the parties hereto or the government of the Host Country or any State or local government body, service or agency in the Host Country.
- b. To contact me about my registration and/or participation in the WMA Championships.
- c. To provide me with my unique WMA Championships Accreditation Pass and competition bibs.
- d. To provide emergency medical treatment in the event that I am injured or otherwise become ill or incapacitated during the WMA Championships.
- e. Personal Details may also be used for any purpose:
  - i. Required or authorized by law
  - ii. Required in order to investigate an unlawful activity
  - iii. Required by an enforcement body for investigative activities
  - iv. Necessary to prevent a serious and imminent threat to a person's life, health or safety, or to public health or safety
- f. Personal Details may be disclosed overseas for the stated purposes.

11. I agree to allow WMA to hold the Personal Details and medical data in the WMA Registration Database.

12. I agree that I will comply with all government protocols and regulations necessary for entry into the Host Country, including without limitation all COVID-related requirements, that are applicable at the time of my arrival. I further agree that I will comply with all such protocols and regulations for the duration of my stay in the Host Country and during the WMA Championships.

13. I consent to the conduct of identity verification checks, background security checks, and any other security checks, which may include inspecting my personal property. I understand and agree that these checks may be conducted at any time, including, but not limited to, during my entry to and departure from any venue.

14. I am aware that events may be delayed or canceled due to conditions that are beyond the control of the LOC and WMA. I agree that the LOC and WMA shall not be responsible or liable for any loss, financial or otherwise, that I may incur, arising out of or caused directly or indirectly by forces beyond the control of the LOC and WMA, including, without limitation, strikes, work stoppages, accidents, acts of war or terrorism, civil or military disturbances, weather, pandemics or epidemics or disease, nuclear or natural catastrophes or acts of God, and interruptions, loss or malfunctions of utilities, communications or computer (software and hardware) services.

This Agreement and any other documents or agreements related thereto are in the English language only and will be deemed to be executed in English. Translation into a language other than English is provided for convenience only. Any translation into any other language shall not be an official version thereof, and in the event of any conflict in interpretation or meaning between the English version and such translation, the English version shall take precedence.

### **Drug Testing and Gender Eligibility**

I acknowledge that Drug Testing will be conducted under the WMA/World Athletics Anti-Doping Rules and Regulations and hereby give my consent to be subject to any drug testing requirements at the WMA Championships. I further acknowledge that it is my responsibility to meet current World Athletics rules and regulations governing gender eligibility and hereby declare that I meet all such requirements. NOTE: If selected for drug testing, Competitors must declare any/all medications being used by them on the doping control form. Any athlete using a prohibited substance as defined in the Regulations, must apply for an exemption (TUE) to the WMA Anti-Doping and Medical Committee. Athletes taking or requiring exemption for a prohibited substance must apply to the WMA Medical Officer (Carole Filer) for a TUE exemption (7 Tapton Bank, Sheffield, S10 5GG, Great Britain; Tel: 0044 (0) 754882 6151; e-mail: [antidoping@world-masters-athletics.org](mailto:antidoping@world-masters-athletics.org)). If an exemption is refused, the prohibited substance(s) concerned must not be used, and should you be selected for testing and the test proves positive, this may result in a suspension. Please note that no other medical certificate(s) will be accepted in substitution for a TUE certificate. If you are granted a TUE exemption certificate, this must be with you at all times along with proof of identification, and must be produced at the Doping Control Centre if you are selected for a drug test. Details of prohibited substances and all Anti-Doping procedures are available on the World Athletics website ([www.worldathletics.org](http://www.worldathletics.org)), the WMA website ([www.world-masters-athletics.org](http://www.world-masters-athletics.org)) and from your World Athletics Affiliated Federation. The Competition Handbook will also contain details of the Anti-Doping Procedures to be undertaken during the championships.

### **Registration Services**

Registration services are being provided by SimplyRegister, Inc. I acknowledge that I have read SimplyRegister's Terms of Use ([www.simplyregister.net/terms/use.html](http://www.simplyregister.net/terms/use.html)) in its entirety and that I understand and agree to all of the provisions contained therein.

## Cancellation and Refund Policy

No refunds are available for this event. I understand and agree that all fees are registration fees, not participation fees, and that there are no refunds for any reason.

## Travel Visa Acknowledgment (for athletes who require travel visas)

I have reviewed the travel visa requirements, including the expected visa wait times for the United States (<https://travel.state.gov/content/travel/en/us-visas/visa-information-resources/global-visa-wait-times.html>), and I understand that I must apply for a visa well in advance. In addition, I understand that my National Organization must validate and approve my registration before I can request an invitation letter, which will add additional time, and I further understand that the decision and time frame for such validation depends on my National Organization. I acknowledge and agree that there are no refunds of any fees due to the time it takes or rejection during the processes for validation, request for invitation letter, or travel visa application, or due to any other reason.



# FULL COMPETITION SCHEDULE

WMA Indoor Championships Preliminary Schedule - Alachua County, Florida 23-30 MARCH 2025								
Opening Ceremony: 22 March 2025 at 18:00								
WMAI 2025	Sunday 23	Monday 24	Tuesday 25	Wednesday 26	Thursday 27	Friday 28	Saturday 29	Sunday 30
60m	Heats	Men						
	Semifinals Finals	Men Women	Men					
200m	Heats			Men	Women			
	Semifinals Finals			Men	Women Men	Women		
400m	Semifinals *						ALL	
	Finals	ALL						ALL
800m	Semifinals							
	Finals							
1500m	Semifinals					ALL		
	Finals							
3000m	Finals		Men					
	Heats				Women			
60m hurdles	Semifinals							ALL
	Finals							ALL
3000m Walk								
	Cross Country							
10km Walk Road								
	10km Run Road							ALL
4 x 200m	Finals							
	Finals							ALL
4 x 200m mixed								
	Pentathlon			M35-50/W35-45				
Long Jump					W60+	M50-60	M35-45/M80+	M65-75
	Triple Jump				M50-60	W35-55	M65-75	W60+
High Jump					M65-75	W60+	W35-55	M35-45/M80+
	Pole Vault				W35-55	M35-45/M80+	W60+	M50-60
Shot Put					W35-50	W55-65	W70+/M80+	M50-55
	Weight Throw		M35-45	M60-65	W70+/M80+	M35-45	M50-55	M60-65
Javelin								
	Discus		W35-45	W70+/M80+	M35-45	M60-65	M70-75	W35-50
Hammer								
			M50-55	W55-65	W35-50	W70+/M80+	M60-65	M70-75

* 400m special advancement table			
# Competitors	# Semi	Advancement	Final
1-6	0		1
7-12	2	2 P + 4 T	1
13-18	3	2 P + 2 T	1
19-24	4	1 P + 2 T	1
25-30	5	6 T	1
31-36	6	6 T	1
37-42	7	6 T	1
43-48	8	6 T	1
49-54	9	6 T	1

Note: The final schedule with start times and competition venues will be published sometime in February. The final schedule is determined after registration has ended, because it must be adapted to the number of entries and capacity of the venues.



# MEN'S COMPETITION SCHEDULE

WMA Indoor Championships Preliminary Schedule - Alachua County, Florida 23-30 MARCH 2025														
Opening Ceremony: 22 March 2025 at 18:00														
Event	Round	M35	M40	M45	M50	M55	M60	M65	M70	M75	M80	M85	M90	M95+
60m	Heat	24	24	24	24	24	24	24	24	24	24	24	24	24
	Semifinals	24	24	24	24	24	24	24	24	24	24	24	24	24
	Finals	25	25	25	25	25	25	25	25	25	25	25	25	25
200m	Heat	26	26	26	26	26	26	26	26	26	26	26	26	26
	Semifinals	26	26	26	26	26	26	26	26	26	26	26	26	26
	Finals	27	27	27	27	27	27	27	27	27	27	27	27	27
400m	Semifinals	29	29	29	29	29	29	29	29	29	29	29	29	29
	Finals	30	30	30	30	30	30	30	30	30	30	30	30	30
	Semifinals	23	23	23	23	23	23	23	23	23	23	23	23	23
800m	Finals	24	24	24	24	24	24	24	24	24	24	24	24	24
	Semifinals	28	28	28	28	28	28	28	28	28	28	28	28	28
	Finals	29	29	29	29	29	29	29	29	29	29	29	29	29
1500m	Finals	25	25	25	25	25	25	25	25	25	25	25	25	25
	Heat	29	29	29	29	29	29	29	29	29	29	29	29	29
	Semifinals	30	30	30	30	30	30	30	30	30	30	30	30	30
60 Hurdles	Finals	30	30	30	30	30	30	30	30	30	30	30	30	30
	Finals	28	28	28	28	28	28	28	28	28	28	28	28	28
	Finals	23	23	23	23	23	23	23	23	23	23	23	23	23
3000m Walk	Finals	30	30	30	30	30	30	30	30	30	30	30	30	30
	Finals	29	29	29	29	29	29	29	29	29	29	29	29	29
	Finals	23	23	23	23	23	23	23	23	23	23	23	23	23
Cross Country	Finals	30	30	30	30	30	30	30	30	30	30	30	30	30
	Finals	29	29	29	29	29	29	29	29	29	29	29	29	29
	Finals	30	30	30	30	30	30	30	30	30	30	30	30	30
10km Road Walk	Finals	29	29	29	29	29	29	29	29	29	29	29	29	29
	Finals	30	30	30	30	30	30	30	30	30	30	30	30	30
	Finals	29	29	29	29	29	29	29	29	29	29	29	29	29
4 x 200m mixed	Finals	30	30	30	30	30	30	30	30	30	30	30	30	30
	Finals	30	30	30	30	30	30	30	30	30	30	30	30	30
	Finals	25	25	25	25	24	24	24	23	23	23	23	23	23
Pentathlon	Finals	29	29	29	28	28	28	28	28	28	28	28	28	28
	Finals	26	26	26	27	27	27	27	29	29	29	29	29	29
	Finals	30	30	30	26	26	26	26	27	27	27	27	27	27
Long Jump	Finals	28	28	28	30	30	30	30	26	26	26	26	26	26
	Finals	24	24	24	30	30	30	25	25	25	25	25	25	25
	Finals	28	28	28	29	29	29	30	30	30	30	30	30	30
Triple Jump	Finals	28	28	28	27	27	27	27	27	27	27	27	27	27
	Finals	24	24	24	30	30	30	25	25	25	25	25	25	25
	Finals	28	28	28	29	29	29	30	30	30	30	30	30	30
High Jump	Finals	26	26	26	27	27	27	27	27	27	27	27	27	27
	Finals	28	28	28	29	29	29	29	29	29	29	29	29	29
	Finals	24	24	24	30	30	30	25	25	25	25	25	25	25
Pole Vault	Finals	28	28	28	29	29	29	29	29	29	29	29	29	29
	Finals	24	24	24	30	30	30	25	25	25	25	25	25	25
	Finals	28	28	28	29	29	29	30	30	30	30	30	30	30
Shot Put	Finals	26	26	26	27	27	27	27	27	27	27	27	27	27
	Finals	25	25	25	26	26	26	26	26	26	26	26	26	26
	Finals	27	27	27	24	24	24	24	24	24	24	24	24	24
Weight Throw	Finals	27	27	27	24	24	24	24	24	24	24	24	24	24
	Finals	25	25	25	26	26	26	26	26	26	26	26	26	26
	Finals	27	27	27	24	24	24	24	24	24	24	24	24	24
Javelin	Finals	27	27	27	24	24	24	24	24	24	24	24	24	24
	Finals	25	25	25	26	26	26	26	26	26	26	26	26	26
	Finals	27	27	27	24	24	24	24	24	24	24	24	24	24
Discus	Finals	27	27	27	24	24	24	24	24	24	24	24	24	24
	Finals	25	25	25	26	26	26	26	26	26	26	26	26	26
	Finals	27	27	27	24	24	24	24	24	24	24	24	24	24
Hammer	Finals	27	27	27	24	24	24	24	24	24	24	24	24	24
	Finals	25	25	25	26	26	26	26	26	26	26	26	26	26
	Finals	27	27	27	24	24	24	24	24	24	24	24	24	24

Note: The final schedule with start times and competition venues will be published sometime in February. The final schedule is determined after registration has ended, because it must be adapted to the number of entries and capacity of the venues.

# WOMEN'S COMPETITION SCHEDULE

## WMA Indoor Championships Preliminary Schedule - Alachua County, Florida 23-30 MARCH 2025

Opening Ceremony: 22 March 2025 at 18:00

Event	Round	W35	W40	W45	W50	W55	W60	W65	W70	W75	W80	W85	W90	W95+
60m	Heat	23	23	23	23	23	23	23	23	23	23	23	23	23
	Semifinals	23	23	23	23	23	23	23	23	23	23	23	23	23
	Finals	24	24	24	24	24	24	24	24	24	24	24	24	24
200m	Heat	27	27	27	27	27	27	27	27	27	27	27	27	27
	Semifinals	27	27	27	27	27	27	27	27	27	27	27	27	27
	Finals	28	28	28	28	28	28	28	28	28	28	28	28	28
400m	Semifinals	29	29	29	29	29	29	29	29	29	29	29	29	29
	Finals	30	30	30	30	30	30	30	30	30	30	30	30	30
	Semifinals	23	23	23	23	23	23	23	23	23	23	23	23	23
800m	Finals	24	24	24	24	24	24	24	24	24	24	24	24	24
	Semifinals	28	28	28	28	28	28	28	28	28	28	28	28	28
	Finals	29	29	29	29	29	29	29	29	29	29	29	29	29
1500m	Finals	26	26	26	26	26	26	26	26	26	26	26	26	26
	Heat	29	29	29	29	29	29	29	29	29	29	29	29	29
	Semifinals	30	30	30	30	30	30	30	30	30	30	30	30	30
3000m	Finals	30	30	30	30	30	30	30	30	30	30	30	30	30
	Finals	30	30	30	30	30	30	30	30	30	30	30	30	30
	Finals	27	27	27	27	27	27	27	27	27	27	27	27	27
Cross Country	Finals	23	23	23	23	23	23	23	23	23	23	23	23	23
	Finals	30	30	30	30	30	30	30	30	30	30	30	30	30
	Finals	29	29	29	29	29	29	29	29	29	29	29	29	29
10km Road Walk	Finals	30	30	30	30	30	30	30	30	30	30	30	30	30
	Finals	30	30	30	30	30	30	30	30	30	30	30	30	30
	Finals	25	25	25	25	25	25	25	25	25	25	25	25	25
4 x 200m mixed	Finals	26	26	26	26	26	26	26	26	26	26	26	26	26
	Finals	28	28	28	28	28	28	28	28	28	28	28	28	28
	Finals	29	29	29	29	29	29	29	29	29	29	29	29	29
Pentathlon	Finals	27	27	27	27	27	27	27	27	27	27	27	27	27
	Finals	27	27	27	27	27	27	27	27	27	27	27	27	27
	Finals	24	24	24	24	24	24	24	24	24	24	24	24	24
Long Jump	Finals	26	26	26	26	26	26	26	26	26	26	26	26	26
	Finals	28	28	28	28	28	28	28	28	28	28	28	28	28
	Finals	29	29	29	29	29	29	29	29	29	29	29	29	29
Triple Jump	Finals	27	27	27	27	27	27	27	27	27	27	27	27	27
	Finals	27	27	27	27	27	27	27	27	27	27	27	27	27
	Finals	24	24	24	24	24	24	24	24	24	24	24	24	24
High Jump	Finals	27	27	27	27	27	27	27	27	27	27	27	27	27
	Finals	27	27	27	27	27	27	27	27	27	27	27	27	27
	Finals	24	24	24	24	24	24	24	24	24	24	24	24	24
Pole Vault	Finals	27	27	27	27	27	27	27	27	27	27	27	27	27
	Finals	27	27	27	27	27	27	27	27	27	27	27	27	27
	Finals	24	24	24	24	24	24	24	24	24	24	24	24	24
Shot Put	Finals	26	26	26	26	26	26	26	26	26	26	26	26	26
	Finals	26	26	26	26	26	26	26	26	26	26	26	26	26
	Finals	24	24	24	24	24	24	24	24	24	24	24	24	24
Weight Throw	Finals	30	30	30	30	30	30	30	30	30	30	30	30	30
	Finals	29	29	29	29	29	29	29	29	29	29	29	29	29
	Finals	26	26	26	26	26	26	26	26	26	26	26	26	26
Javelin	Finals	26	26	26	26	26	26	26	26	26	26	26	26	26
	Finals	26	26	26	26	26	26	26	26	26	26	26	26	26
	Finals	24	24	24	24	24	24	24	24	24	24	24	24	24
Discus	Finals	26	26	26	26	26	26	26	26	26	26	26	26	26
	Finals	26	26	26	26	26	26	26	26	26	26	26	26	26
	Finals	24	24	24	24	24	24	24	24	24	24	24	24	24
Hammer	Finals	26	26	26	26	26	26	26	26	26	26	26	26	26
	Finals	26	26	26	26	26	26	26	26	26	26	26	26	26
	Finals	24	24	24	24	24	24	24	24	24	24	24	24	24

Note: The final schedule with start times and competition venues will be published sometime in February. The final schedule is determined after registration has ended, because it must be adapted to the number of entries and capacity of the venues.

# VISA INFORMATION

The visa process for the United States varies for each consulate or embassy. We recommend working with your local embassy or consulate to ensure you are following the correct process for your country. Please begin the visa process immediately, to ensure your timely entry. For most countries, the time to complete the visa process is currently averaging 120 days. This time frame will vary, and some countries may experience up to a year of processing time. The WMACi25 LOC will provide visa support services, but the process begins by following the steps below. Beginning the process early allows us time to assist if any issues arise.

## How to apply for a Visa

### Step 1: Accommodation

Secure your accommodation for the duration of your training and competition as this will be asked in the application process.

### Step 2: Register for WMACi 2025

Registration will open June 2024. Invitation letters will only be issued to athletes who have booked accommodations, registered for their events, and have been confirmed by their National Organization.

### Step 3: Visa Waiver Program

The Visa Waiver Program (VWP) enables most citizens or nationals of participating countries\* to travel to the United States for tourism or business for stays of 90 days or less without first obtaining a visa, when they meet all requirements. Travelers must have a valid Electronic System for Travel Authorization (ESTA) approval prior to travel. If you prefer to have a visa in your passport, you may still apply for a visitor (B) visa.

### Step 4: Apply for Visa

We advise the following for applying for a visitor B visa, which for most countries, covers athletes, teams, and support staff coming to the US for a competition. Again, please inquire with your local embassy or consulate. To apply for your visa, click the button below. The "Visa Wizard" will take you through each step of the process including correct forms, picture uploads, and fees.



The Visa Waiver Program (VWP) enables most citizens or nationals of participating countries to travel to the United States for tourism or business for stays of 90 days or less without first obtaining a visa, when they meet all requirements. Travelers must have a valid Electronic Systems for Travel Authorization (ESTA) approval prior to travel. If you prefer to have a visa in your passport, you may still apply for a visitor (B) visa.

## Who Should Apply for an ESTA?

- 🍊 You are a citizen or eligible national of a Visa Waiver Program Country
- 🍊 You are currently not in possession of a visitor's visa
- 🍊 Your travel is for 90 days or less
- 🍊 You plan to travel to the United States for business or pleasure
- 🍊 You want to apply for a new authorization for one person or a group of applications for two or more persons

## Who Should Apply for an ESTA?

Andorra	Hungary	Norway
Australia	Iceland	Poland
Austria	Ireland	Portugal
Belgium	Israel	San Marino
Brunei	Italy	Singapore
Chile	Japan	Slovakia
Croatia	Latvia	Slovenia
Czech Republic	Liechtenstein	South Korea
Denmark	Lithuania	Spain
Estonia	Luxembourg	Sweden
Finland	Malta	Switzerland
France	Monaco	Taiwan
Germany	Netherlands	United Kingdom
Greece	New Zealand	

## Helpful Links

<https://wmaci2025.com/visa/>

<https://travel.state.gov/content/travel/en/us-visas/tourism-visit/visa-waiver-program.html>

<https://travel.state.gov/content/travel/en/us-visas.html>

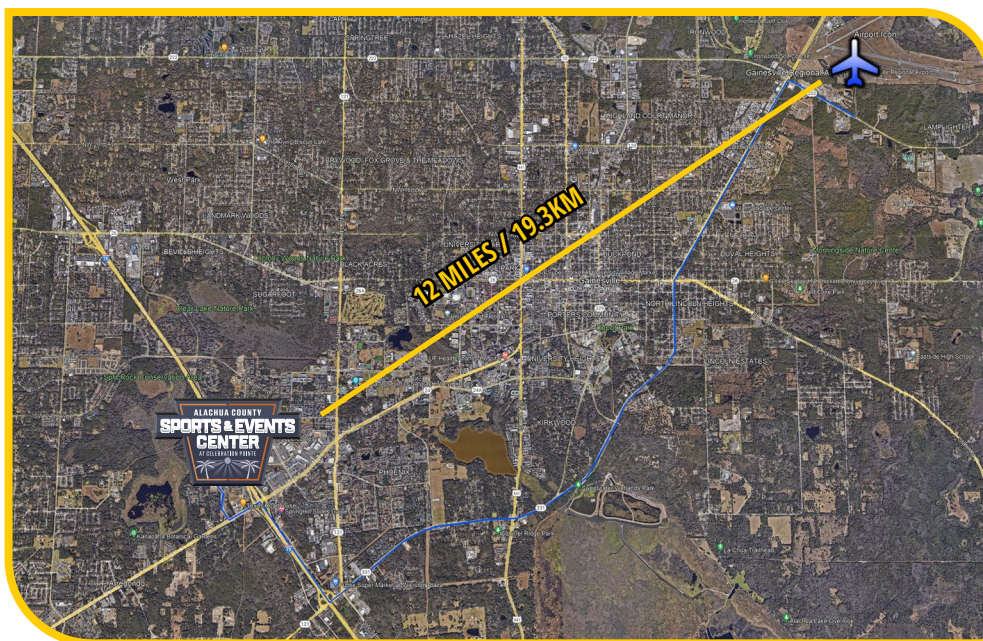


# TRANSPORTATION & ACCOMMODATION

## Airports

Alachua County is in the geographic center of Florida, located in Southeast United States. The area is serviced by the Gainesville Regional Airport (GNV) which has direct connections to:

Airport	Airline
Atlanta International Airport (ATL)	Delta Airlines
Charlotte International Airport (CLT)	American Airlines
Dallas-Fort Worth International Airport (DFW)	American Airlines
Fort Lauderdale International Airport (FLL)	American Airlines
Miami International Airport (MIA)	American Airlines



In addition, Jacksonville International Airport (JAX), Orlando International Airport (MCO), and Tampa International Airport (TPA) are all within a two-hour drive radius.

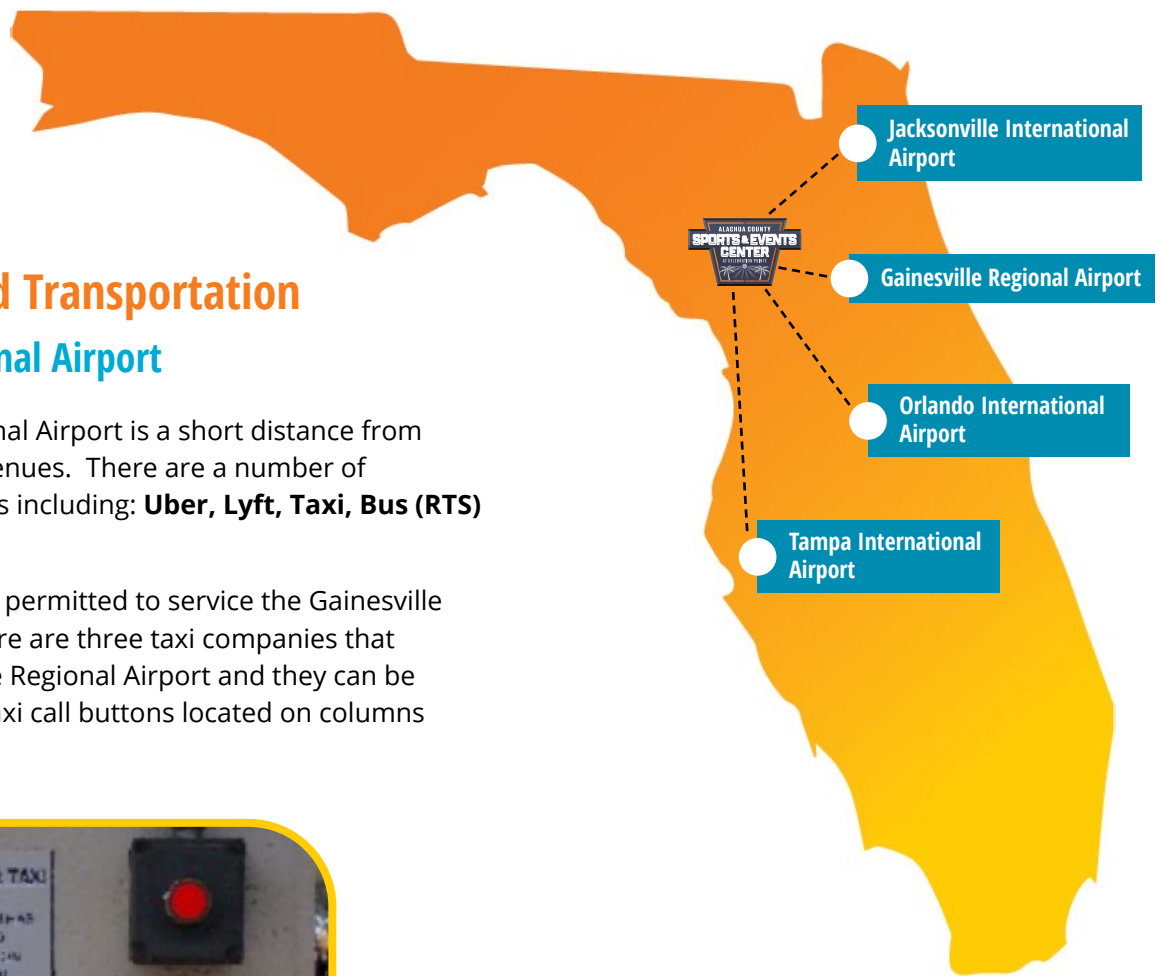
Airport	Distance to ACSEC	Website
Gainesville Regional Airport (GNV)	10 mi / 16km	<a href="http://www.flygainesville.com">www.flygainesville.com</a>
Jacksonville International Airport (JAX)	88mi / 142km	<a href="http://www.flyjacksonville.com">www.flyjacksonville.com</a>
Orlando International Airport (MCO)	119mi / 192km	<a href="http://www.orlandoairports.net">www.orlandoairports.net</a>
Tampa International Airport (TPA)	128mi / 206km	<a href="http://www.tampaairport.com">www.tampaairport.com</a>

## Airport Ground Transportation

### Gainesville Regional Airport

The Gainesville Regional Airport is a short distance from area hotels and the venues. There are a number of transportation options including: **Uber, Lyft, Taxi, Bus (RTS) and Hotel Shuttles**

The Uber and Lyft are permitted to service the Gainesville Regional Airport. There are three taxi companies that service the Gainesville Regional Airport and they can be called using the red taxi call buttons located on columns outside the terminal.



## Hotel Shuttles

### Gainesville Regional Airport

The following partner hotels have complimentary limited airport shuttle service. You will need to schedule this service in advance, directly with the hotel.

Hotel	Distance to ACSEC	Distance to Airport
Best Western Gateway Grand	8mi / 13km	11km / 18km
Comfort Inn University	.8mi / 1.3km	10mi / 16km
Hampton Inn Gainesville	1.4mi / 2.25km	10mi / 16km
Holiday Inn University Center	4.9 mi / 8km	5.3mi / 9km
Sleep Inn & Suites University /Shands	1.3 mi / 2km	10 mi / 16km

The Gainesville Regional Airport has on-site car rental companies on-site, including major companies such as Alamo, Avis, Budget, Dollar, Enterprise, Hertz and National.

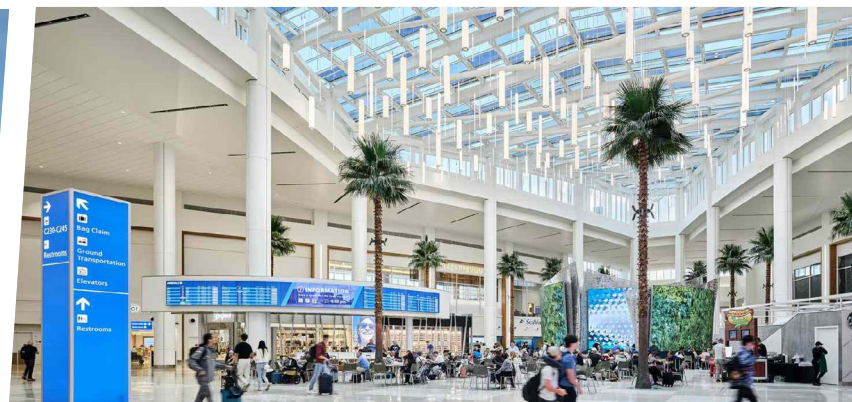
Lastly, if you require assistance in purchasing private transportation to and from the Gainesville Regional Airport, please contact the WMACi25 Local Organizing Committee at [info@wmaci2025.com](mailto:info@wmaci2025.com).

## Airport Ground Transportation

### Orlando International Airport

The Orlando International Airport (MCO) is a major destination airport in Florida. Just 119mi / 192km from the Alachua County Sports and Events Center, MCO offers a number of transportation options including Uber, Lyft, Taxi, Car Rental and Private car.

The WMACi25 Local Organizing Committee has partnered with a transportation provider to offer shared ride shuttle services at a fee. Contact the WMACi25 Local Organizing Committee at [info@wmaci2025.com](mailto:info@wmaci2025.com) for more information.



# Venue Transportation

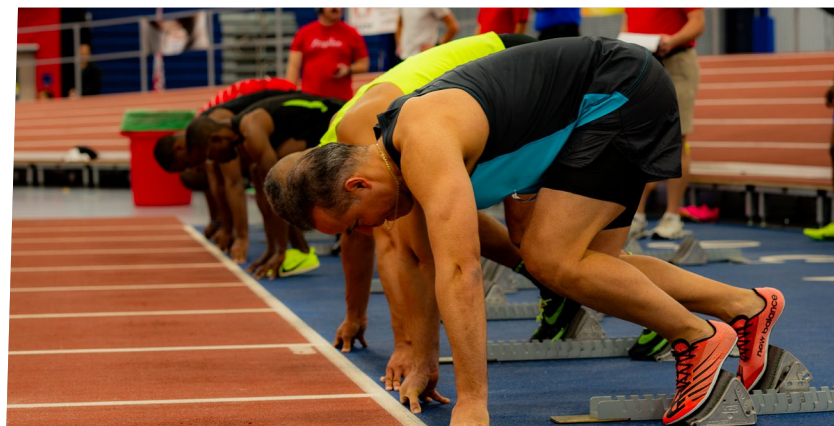
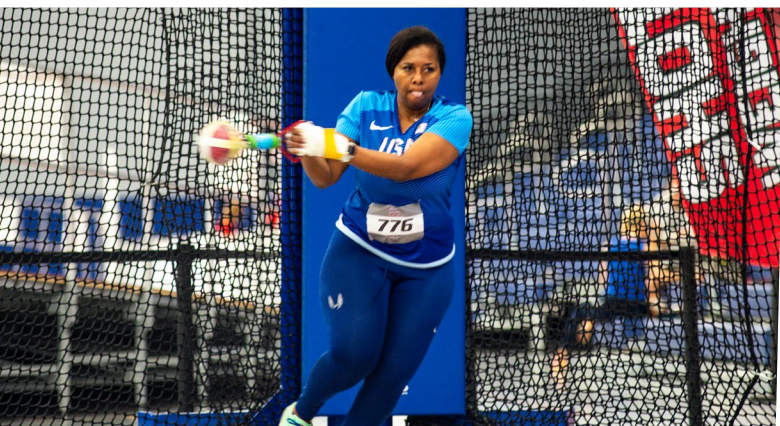
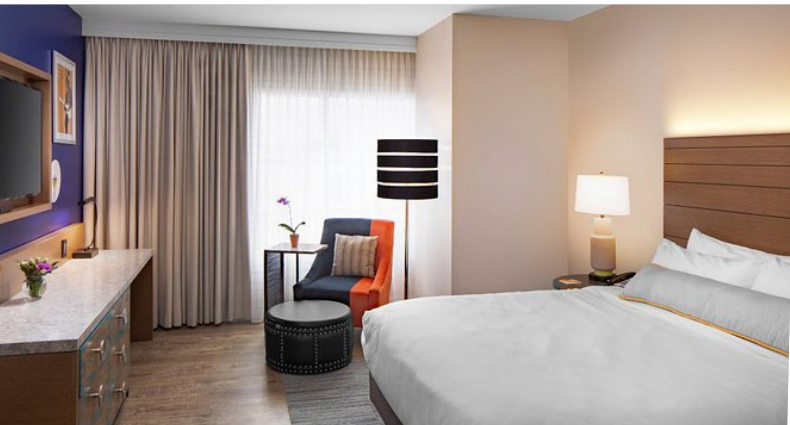
## Transportation Between Venues

The WMACi25 Local Organizing Committee is creating a transportation network connecting the primary and secondary facilities (Alachua County Sports and Events Center and West End). This venue to venue route will operate March 22 – March 30, 2025 and will be provided at no cost to credentialed athletes and guests.

## Transportation Between Hotels and Venue

The WMACi25 Local Organizing Committee is creating a transportation network consisting of one (1) route connecting select hotels to the primary facility (Alachua County Sports and Events Center). This hotel-venue route will be operated March 22 – March 30, 2025 and will be provided at a cost of \$30 per person for credentialed athletes and guests. Transportation Passes for the hotel-venue route must be purchased at the time of event registration in advance. Based upon availability, the WMACi25 Local Organizing Committee may sell a limited number of Transportation Passes on-site at an increased rate of \$50 per person for credentialed athletes and guests.

*Important Note: Athletes and guests booking accommodations through HBC Event Services, the official accommodations provider of the WMACi25, may receive a Transportation Pass at no cost for each registered guests. Free Transportation Passes must be requested at the time of booking your hotel accommodations.*





## Hotel - Venue Route

Route 1 will service the Celebration Pointe / Archer Road hotels. This route will service a total of 15 hotels with 5 total stops. Four stops will be at central locations within the hotel districts providing a short walk for athletes and guests, with the fifth stop located just outside the Alachua County Sports and Events Center. This route is approximately 2.6 miles / 4.25km round trip and will service the following hotels.

**Comfort Inn University**

**Country Inn & Suites Gainesville**

**Courtyard by Marriott Gainesville**

**Doubletree by Hilton Gainesville**

**Drury Inn & Suites Gainesville**

**hom Hotel + Suites**

**Red Roof Inn Plus+ Gainesville**

**Sleep Inn & Suites University/Shands**

**Fairfield Inn & Suites Gainesville**

**Hampton Inn Gainesville**

**Holiday Inn Express & Suites Gainesville I-75**

**Homewood Suites by Hilton Gainesville**

**Hilton Garden Inn Gainesville**

**Springhill Suites Gainesville**

**Super 8 Gainesville**



For questions regarding transportation routes and Transportation Passes, please contact the WMACi25 LOC at [info@wmaci2025.com](mailto:info@wmaci2025.com).



## Accommodations

The WMACi25 Local Organizing Committee has partnered with HBC Event Services to provide the best published refundable rates and outstanding service when booking your accommodations. Booking with HBC Event Services offers several benefits including:

- Welcoming and quality partner hotels with the best possible value
- Flexible booking terms and conditions
- Access to affordable travel insurance
- Free Transportation Pass (see Transportation section on page 32)
- Outstanding customer service

All participants and guests are encouraged to book their hotel accommodations through HBC Event Services. Visit [www.wmaci2025.com/hotels/](http://www.wmaci2025.com/hotels/) for more information and to reach the booking portal. Reservations can be made online and hassle free using a major credit card. We appreciate your support as these partnering hotels assist in sponsoring our event



EVERYDAY IS  
WAFFLE DAY!



IT'S A GOOD DAY  
FOR A GREAT STAY

Delivering the exceptional stay you  
deserve, everywhere you want to be.

Hampton Inn Gainesville  
4225 SW 40th Blvd.  
Gainesville, Florida 32608  
+1 (352)-371-4171

BOOK YOUR STAY AT  
[WMAC12025.COM/HOTELS](https://www.mac12025.com/hotels)

1.4 MILES / 2.3 KM FROM THE ALACHUA  
COUNTY SPORTS & EVENTS CENTER

Hampton

# TRAINING

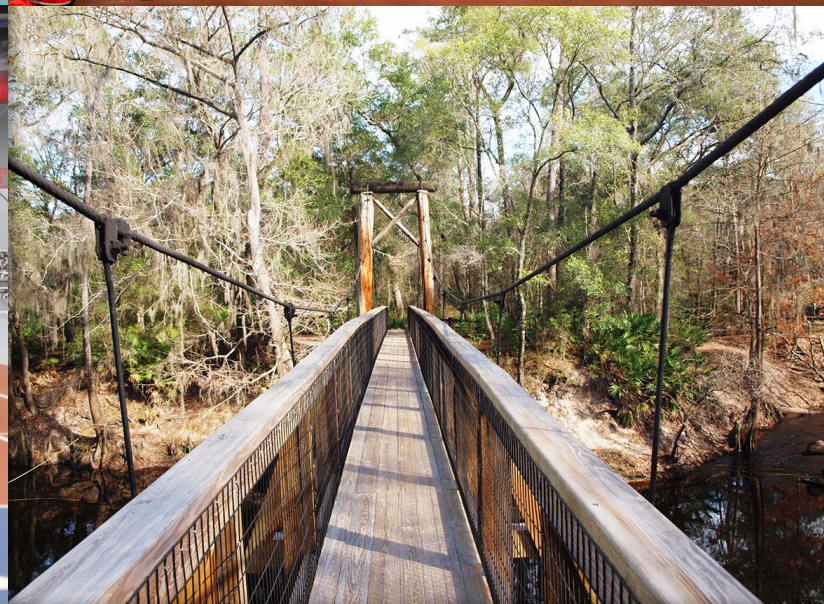
The WMACi25 Local Organizing Committee has arranged opportunities for athletes to train at the Alachua County Sports and Events Center (ACSEC) prior to competition. The ACSEC will offer a morning and afternoon session as follows for a per athlete fee of \$10 per session or \$200 for unlimited sessions. Athletes must request their training passes in advance by emailing [info@wmaci2025.com](mailto:info@wmaci2025.com). Indoor throwing facilities will not be available for training.

Date	Session 1	Session 2
3 March 2025	9:00 - 12:00	17:00 - 20:00
4 March 2025	9:00 - 12:00	17:00 - 20:00
5 March 2025	9:00 - 12:00	17:00 - 20:00
6 March 2025	9:00 - 12:00	17:00 - 20:00
10 March 2025	9:00 - 12:00	17:00 - 20:00
11 March 2025	9:00 - 12:00	17:00 - 20:00
12 March 2025	9:00 - 12:00	17:00 - 20:00
13 March 2025	9:00 - 12:00	17:00 - 20:00
14 March 2025	9:00 - 12:00	17:00 - 20:00
17 March 2025	9:00 - 12:00	17:00 - 20:00
18 March 2025	9:00 - 12:00	17:00 - 20:00
19 March 2025	9:00 - 12:00	17:00 - 20:00

## Pole Rentals

For your convenience, the WMACi25 Local Organizing Committee has partnered with the Florida Pole Vault Factory (FLPVF) to provide pole rentals on-site. The FLPVF has an expansive inventory of almost 200 poles including Pacer One, Fiber Sport, Pacer FXV, UCS Spirit, Pacer Composite, and ESSX. More information on pole rentals and the link to the reservation portal can be found at [www.wmaci2025.com](http://www.wmaci2025.com).





**WORLD MASTERS ATHLETICS  
ALACHUA COUNTY**  
— FLORIDA  
INDOOR CHAMPIONSHIPS 2025

[www.WMACi2025.com](http://www.WMACi2025.com)

[info@WMACi2025.com](mailto:info@WMACi2025.com)